



2013 ETHELLES ATLANTIC CHAMPIONSHIP SERIES

SAILING INSTRUCTIONS

2013 King of the Bays Regatta | May 18 & 19 | Shelter Island, NY

1. RULES:

- 1.1 The 2013 King of the Bays Regatta will be governed by the "Rules" as defined in the Current Racing Rules of Sailing (2013-2016 RRS).
- 1.2 All Prescriptions of US Sailing will apply.
- 1.3 The International Etchells Class Rules are changed as follows: All competing boats shall carry a hand held VHF radio for safety purposes, and Race Committee communications.
- 1.4 Except in an emergency, a boat shall neither make radio transmissions while racing nor receive radio communications not available to all competing boats. This restriction also applies to cellular phones.

2. NOTICES TO COMPETITORS:

- 2.1 Notices to competitors will be posted on the Official Notice Board located on the first floor of the Shelter Island Yacht Club.

3. CHANGES:

- 3.1 Any changes will be posted by 0800 hours on the day they will take effect, except that any change in the schedule of races will be posted prior to 1800 hours of the day one (1) week before they will take effect.

4. SIGNALS MADE ASHORE:

- 4.1 Signals made ashore will be displayed from the starboard spreader, facing seaward, of the main flagpole at Shelter Island Yacht Club.
- 4.2 Flag "L", flown from the Shelter Island Yacht Club flagpole signifies that a change in Sailing Instructions, or other notice to competitors has been posted on the official notice board.
- 4.3 Flag "AP", with two sound signals means racing has been postponed. The first warning signal of the day will be made not less than 60 minutes after the lowering of this signal.

5. SCHEDULE OF RACES:

- 5.1 May 18 & 19, 2013
- 5.2 Up to 9 Races are scheduled
- 5.3 The scheduled time for the warning signal for the first race on Saturday, May 18th is 1055 hours and on Sunday, May 19th is 1000 hours.
- 5.4 If the Race Committee intends to start another race on the same day, flag "R" will be displayed on the signal boat at the finish. Subsequent races will be held as soon as possible after the end of the previous race.
- 5.5 On the final race day of each regatta, no warning signal will be made after 1500 hours.

6. RACING AREAS:

- 6.1 All racing will be in Gardiners Bay, racing area "G", unless a signal is made ashore indicating the following:
- 6.2 Flag "O": Orient Harbor
Flag "R": Noyac Bay
Flag "P": Peconic Bay (Southold Bay)
- 6.3 If the racing area is to be other than Gardiners Bay, one of the flags listed above will be signaled ashore by 0800.

6.4 In the event of a Postponement ashore, if the racing area is to be other than Gardiners Bay, one of the flags listed above will be signaled within one minute of the lowering of the "AP" flag.

6.5 See Addendum #2 – Local Charts

7. THE COURSES:

7.1 Courses will be described below and in **ADDENDUM #1 COURSE ILLUSTRATIONS.**

7.2 Course Designations:

7.3 **Course #3:** Windward, Leeward, Windward (finish)

Course #4: Windward, Leeward, Windward, Leeward (finish)

Course #5: Windward, Leeward, Windward, Leeward, Windward (finish).

7.4 Courses will be signaled using a flag with the designated number printed on it prior to the warning signal of each race.

7.5 The approximate magnetic compass bearing, and the distance from the starting line to the first mark will be displayed on a course board on the Race Committee signal boat prior to the warning signal of each race.

8. MARKS:

8.1 Windward and Leeward marks will be inflated orange tetrahedrons.

8.2 Offset marks will be 2' orange balls.

8.3 The windward mark and the accompanying offset mark shall be left to port.

8.4 When a leeward "gate" is employed, boats shall sail between the gate marks from the direction of the previous mark and round either gate mark.

8.5 A single leeward mark shall be left to port.

8.6 New marks (see Sailing Instruction 12) will be green tetrahedrons.

9. THE START:

9.1 Races shall be started in accordance with RRS 26.

9.2 The starting line will be between a staff displaying an orange flag on the Race Committee signal boat and an orange tetrahedron OR a staff displaying an orange flag on a pin boat on the port end of the line.

9.3 A boat starting later than ten (10) minutes after her starting signal will be scored "DNS" (Did Not Start). (This changes rule A4.1).

10. RECALLS:

10.1 In the event of an individual recall, the sail numbers or bow numbers of any boat or boats that are identified as OCS may be announced on VHF channel 72. Failure of a boat to see or hear her recall notification, and the timing and order of such hails, or the length of time it takes to make a notification on the VHF radio will not be grounds for redress (This changes RRS 29.1 and 60.1 b).

10.2 Boats subject to the "I" Flag Rule shall sail to the pre-start side of the line around either end before start.

11. RACE MANAGEMENT BOATS:

11.1 The Race Committee signal boat will display a navy blue flag with the initials RC.

11.2 Pin boat and mark boats will display a yellow flag with initials RC.

12. CHANGE OF THE NEXT LEG OF THE COURSE:

12.1 To change the next leg of the course, the race committee will lay a new mark (or move the finishing line) and remove the original mark as soon as practical. When in a subsequent change a new mark is replaced, it will be replaced by an original mark..

12.2 If the windward mark is moved and there is an offset market it may not be reset.

13. THE FINISH:

- 13.1 The Finish line for **Windward finishes** (Courses 3 & 5) will be between a staff displaying an orange flag on a race committee vessel and a nearby mark OR between staffs displaying orange flags on race committee vessels.
- 13.2 The Finish line for **Leeward finishes** (Course 4) will be between a staff displaying an orange flag on a race committee vessel and a nearby mark OR between staffs displaying orange flags on race committee vessels.

14. TIME LIMITS:

- 14.1 Any race in which no boat rounds the first windward mark within 45 minutes, or finishes within two and one half (2.5) hours of the start shall be abandoned. All boats not finishing within 30 minutes of the finish time of the first boat to finish a race will be scored "TLE." A "TLE" score shall be one more point than the number of boats that have finished within the time limit. (This changes rules 35, A 4.1 and A 4.2).

15. PENALTIES FOR BREAKING RULES OF PART 2:

- 15.1 The penalty for breaking a Rule of Part 2 is changed in that if a boat breaks a Rule of Part 2 her penalty will be a One-Turn Penalty including one tack and one jibe, unless she breaks a Rule of Part 2 within the 3 boat length zone. Then her penalty will be a Two-Turn Penalty. (This changes Rule 44).
- 15.2 A boat is allowed to take a Scoring Penalty for a breach of a Rule of Part 2 after the incident but prior to the protest hearing, by acknowledging the infringement. This penalty shall be 40% of the number of boats entered in that regatta (rounding 0.5 upward), but shall not be less than 5 places added to her actual finish position. However, she will not be scored worse than Did Not Finish (DNF). (This changes Rules 44.1 and 44.3)

16. PROTESTS:

- 16.1 Protest forms will be available at the Jury desk located in the general area around the bar.
- 16.2 Protests shall be delivered to the Jury desk within one (1) hour after the Race Committee signal boat docks.
- 16.3 Protests that have been filed will be posted on the Official Notice Board along with parties involved.

17. SCORING:

- 17.1 The Low Point System, as provided in Rule A4 will apply, except as changed in section 14.1 of these sailing instructions and as follows:
- 17.2 Up to nine (9) races are scheduled for the 2013 King of the Bays Regatta, of which, one (1) race must be completed to constitute a regatta.
- 17.3 When fewer than five (5) races have been completed in a regatta, the boat's score will be the total of her race scores.

18. BOAT IDENTIFICATION:

- 18.1 Bow numbers to be provided at registration

19. HAUL OUT RESTRICTION:

- 19.1 All boats shall be afloat prior to the warning signal for the first race of each regatta and shall not be hauled out during the regatta except with and according to the written terms and permission of the principal race officer or the chief judge for the event.

20. PRIZES:

- 20.1 Regatta trophies will be awarded to at least the first (1st) through third (3rd) place boats in an awards ceremony at the Shelter Island Yacht Club approximately 1 ½ hours after the Race Committee signal boat docks following the final race of each regatta.
- 20.2 Series awards will be presented following the final race of the Atlantic Series in Newport, RI.

21. COMPETITORS' MEETING:

- 21.1 A non-compulsory competitors' meeting will be held at Shelter Island Yacht Club at 0830 on Saturday, May 18th.
- 21.2 Verbal discussions of the Sailing Instructions will not be done at the competitors' meeting. However, written questions may be submitted to the race committee or class representative prior to or at the meeting and will be

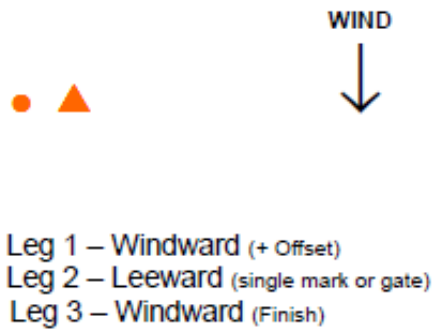
replied to in writing on the Official Notice Board within 45 minutes of the end of the meeting. Any changes to the Sailing Instructions that may result from such questions will be posted at that time rather than by 0800 as stated in Section 3.1.

22. CHECK-IN/CHECK-OUT:

- 22.1 Prior to the warning signal of the first race of each day all boats must check-in and be acknowledged by the Race Committee. Initial check-ins cannot be done by radio.
- 22.2 A boat leaving the course shall notify the Race Committee. This can be done by contacting the RC signal boat by radio or with any other RC vessel.
- 22.3 A boat returning to the course area or arriving late shall check-in directly with the RC signal boat prior to the warning signal for the next race in which it will participate.

ADDENDUM # 1 COURSE ILLUSTRATIONS

COURSE # 3



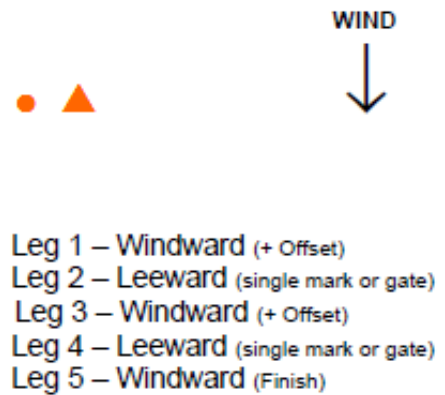
Start ----- R/C

COURSE # 4



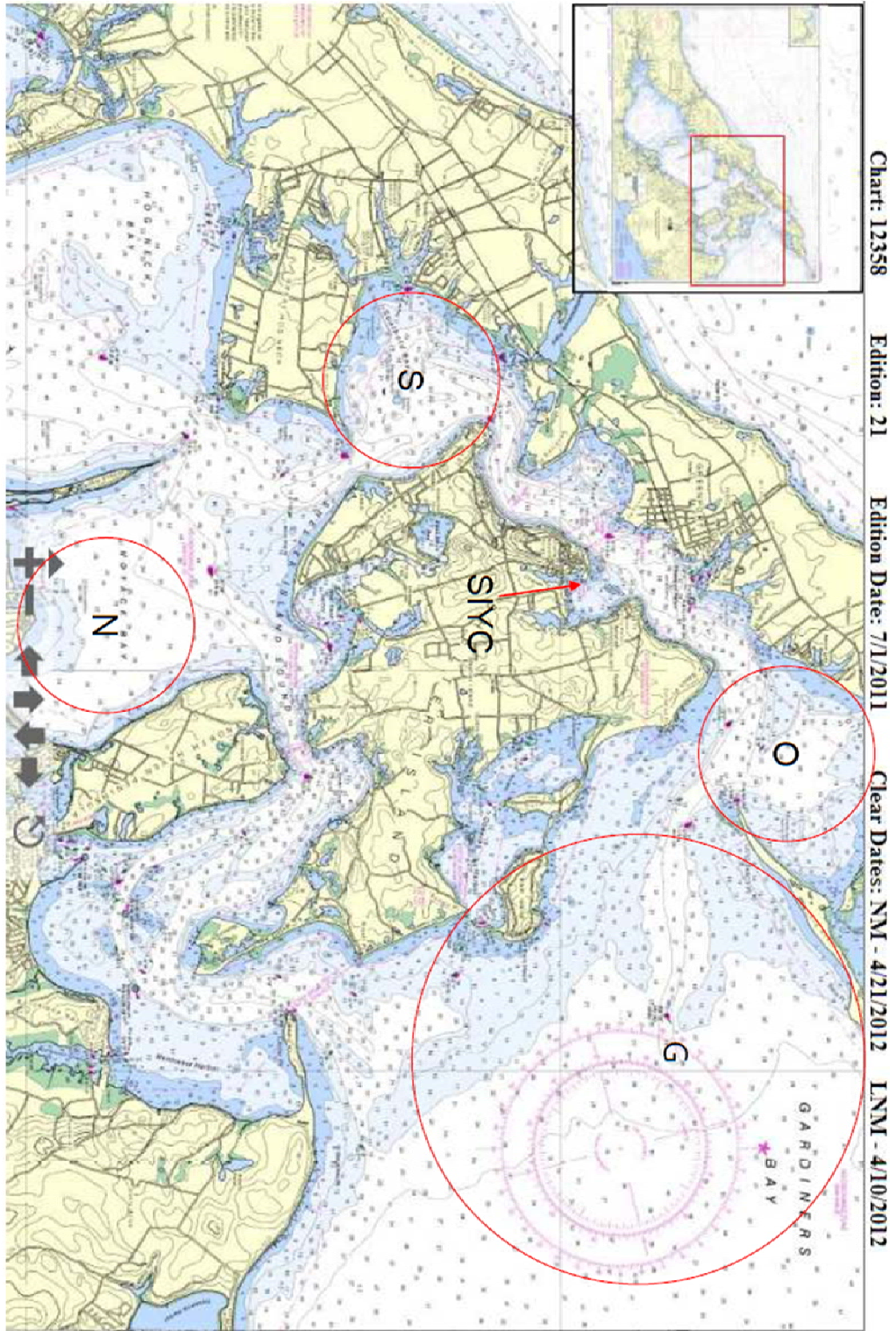
Start/ ----- R/C
Finish

COURSE # 5



Start ----- R/C

ADDENDUM #2 LOCAL CHARTS



UPDATED – MAY 9, 2013